



29           **WHEREAS**, in accordance with section 252.422(2)(b), Florida Statutes, this Ordinance  
30 does not impose any additional requirements or burdens, nor does it create any substantive  
31 rights nor hinder any existing permissible development activities; and

32           **WHEREAS**, in accordance with the Expedited State Review procedures required by  
33 Section 163.3184(3), the County transmitted the proposed amendment and supporting data and  
34 analysis to the applicable review agencies.

35           **BE IT ORDAINED BY THE COUNTY COMMISSION OF HARDEE COUNTY, FLORIDA:**<sup>1</sup>

36           **Section 1.**     The provisions set forth in the recitals to this Ordinance (whereas clauses)  
37 are hereby adopted by the Board of County Commissioners as legislative findings and intent  
38 pertaining to this Ordinance.

39           **Section 2.**     Hardee County hereby adopts the FLU Map 2 - Phosphate Mining Overlay  
40 in the Future Land Use Map Series.

41           **Section 3.**     This Ordinance shall be codified in the Hardee County Comprehensive  
42 Plan. A certified copy of this enacting ordinance shall be located in the Office of the Clerk of the  
43 Court of Hardee County. The Clerk shall also make copies available to the public for a reasonable  
44 publication charge.

45           **Section 4.**     If any provision of this Ordinance is for any reason held to be invalid or  
46 unconstitutional by any court of competent jurisdiction, such provision and such holding shall  
47 not affect the validity of any other provision, and to that end the provisions of this Ordinance  
48 hereby declared severable.

49           **Section 5.**     All ordinances or parts of ordinances in conflict herewith are hereby  
50 repealed to the extent of such conflict.

51           **Section 6.**     That it is the intention of the Board, and it is hereby ordained that the  
52 provisions of this Ordinance shall become and be made a part of the Comprehensive Plan, that  
53 the sections of this Ordinance may be renumbered or relettered to accomplish such intentions,  
54 and that the word Ordinance shall be changed to Section or other appropriate word.

---

<sup>1</sup> Coding: ~~Strikethrough~~ words are deletions to the existing words. Underlined words are additions to the existing words. Changes between first and second reading are indicated with ~~double-strikethrough~~ and double underline.

55            **Section 7. Effective Date.** The effective date of these amendments, if the  
56 amendments are not timely challenged, shall be 31 days after the State Land Planning Agency  
57 notifies the local government that the plan amendment package is complete. If timely  
58 challenged, the amendments shall become effective on the date the State Land Planning Agency  
59 or the Administration Commission enters a final order determining the adopted amendments to  
60 be in compliance. No development orders, development permits, or land uses dependent on  
61 these amendments may be issued or commence before it has become effective. If a final order  
62 of noncompliance is issued by the Administration Council, the amendments may nevertheless be  
63 made effective by adoption of a resolution affirming the effective status, a copy of which  
64 resolution shall be sent to the State Land Planning Agency.

65            **INTRODUCED AND PASSED ON FIRST READING** on first reading and public hearing at a  
66 regular meeting of the Board of County Commissioners held this \_\_\_\_ day of  
67 \_\_\_\_\_, 2026.

68            **PASSED AND ADOPTED ON SECOND READING** and public hearing with a quorum present  
69 and voting, by the Hardee County Commission, this \_\_ day of \_\_\_\_\_, 2026.

70  
71            [SIGNATURE PAGE TO FOLLOW]  
72

73  
74  
75  
76  
77  
78  
79  
80  
81  
82  
83  
84  
85  
86  
87  
88  
89  
90  
91  
92  
93  
94  
95  
96  
97  
98  
99  
100  
101  
102  
103  
104  
105  
106

---

NOEY A. FLORES, CHAIR

ATTEST:

---

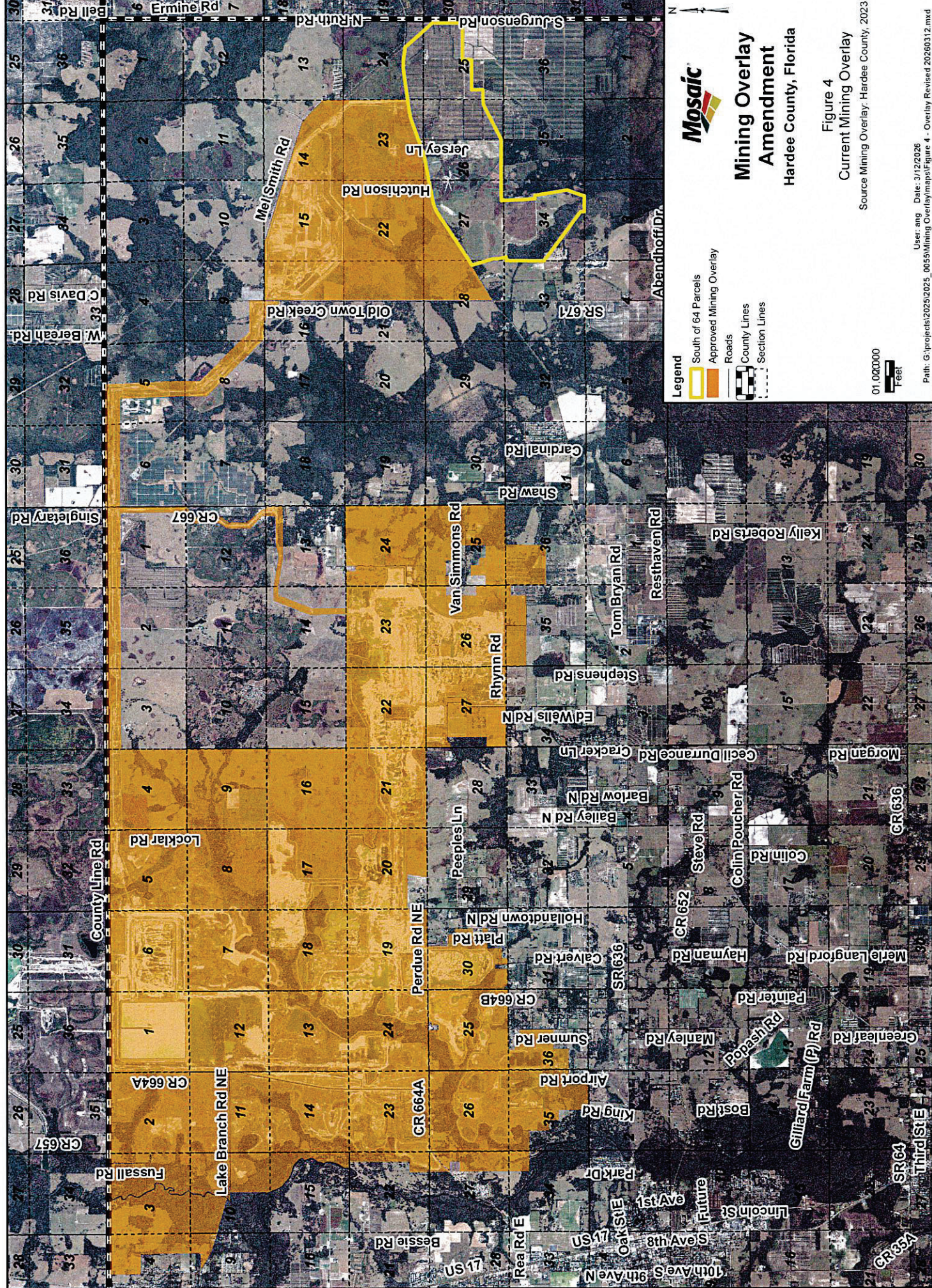
VICTORIA L. ROGERS  
EX-OFFICIO CLERK TO THE BOARD OF COUNTY COMMISSIONERS

APPROVED AS TO FORM AND LEGAL SUFFICIENCY

---

SARAH JOHNSTON  
COUNTY ATTORNEY

**EXHIBIT A**



# Mining Overlay Amendment

Hardee County, Florida

Figure 4  
Current Mining Overlay

Source: Mosaic, Hardee County, 2023

- Legend**
- South of 64 Parcels
  - Approved Mining Overlay
  - Roads
  - County Lines
  - Section Lines

01.000000  
Feet